



Chicanos Por La Causa, Inc.

A PROMISE OF OPPORTUNITY



Early Childhood Development



Introduction and Overview



CPLC Presenting Staff

- Ruth Cuen – Statewide Recruitment, Eligibility, Transition Coordinator
- Carlos Ortiz – Family Service Coordinator
- Felipe Flores – Family Service Coordinator
- Elsa Zamudio – Family Service Specialist



An Historic Perspective

- Over forty years ago CPLC was born at a church in Phoenix. A group of young women and men came together to collectively strategize on how to improve the quality of life for Arizona's Mexican-American population.....Their primary focus was education and economic development

CPLC Today...

serves over 125,000 individuals across Arizona, Nevada and New Mexico

Education & School Readiness

- **Early Childhood Development**
- Community Schools

Social Services

- Behavioral Health Services
- Domestic Violence Shelter
- Residential Treatment Center
- Elderly Services
- Prevention Services
- Immigration
- Parenting – Child Abuse & Neglect Prevention
- Workforce Development Services

Economic Development

- Business Lending
- Commercial Development
- Employment & Training

Community Development (Housing)

- Property Management
- Multi-family Housing - Apartments
- Single Family Homes
- Senior Housing
- Self-help housing



Chicanos Por La Causa, Inc.

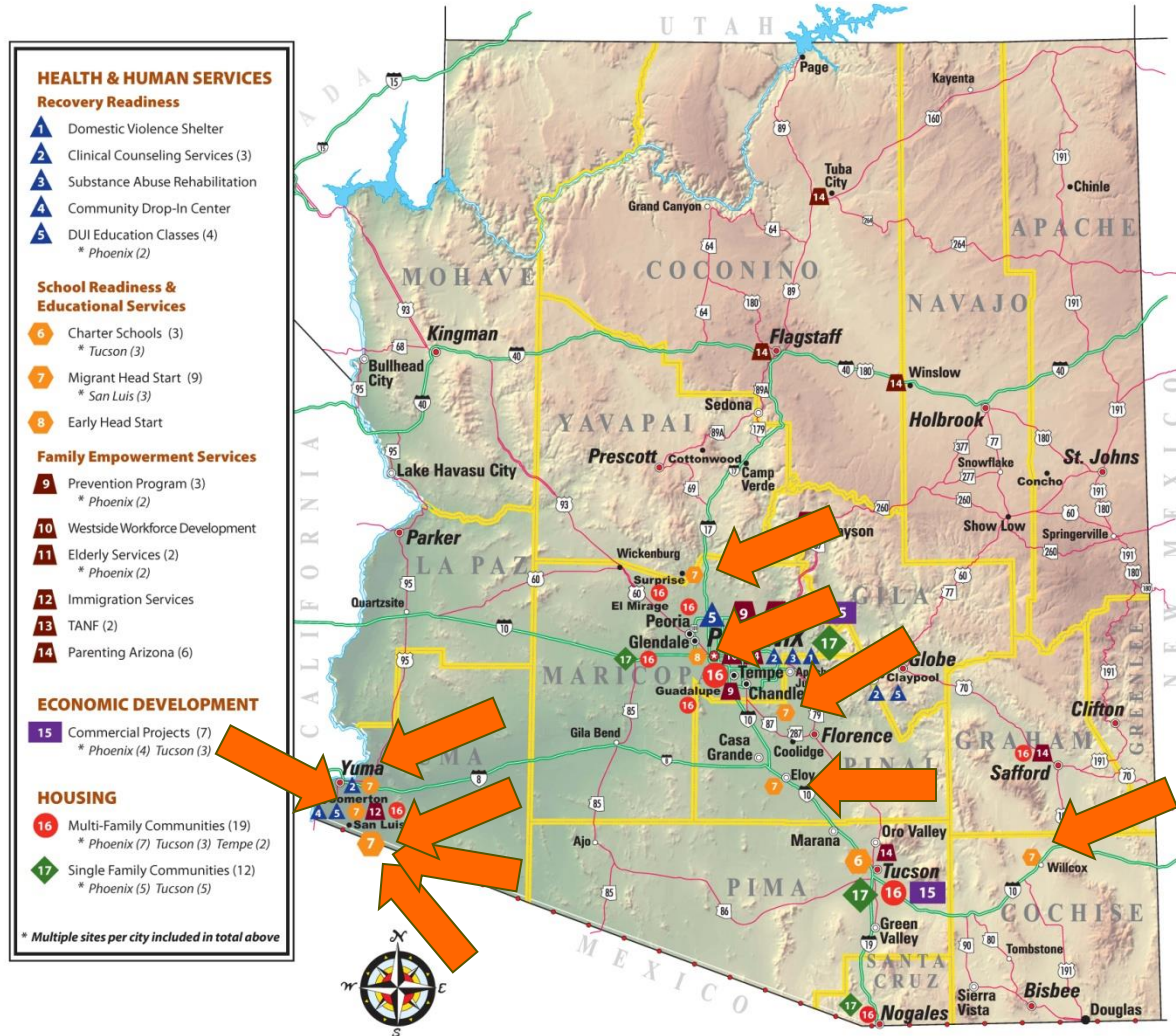
A PROMISE OF OPPORTUNITY

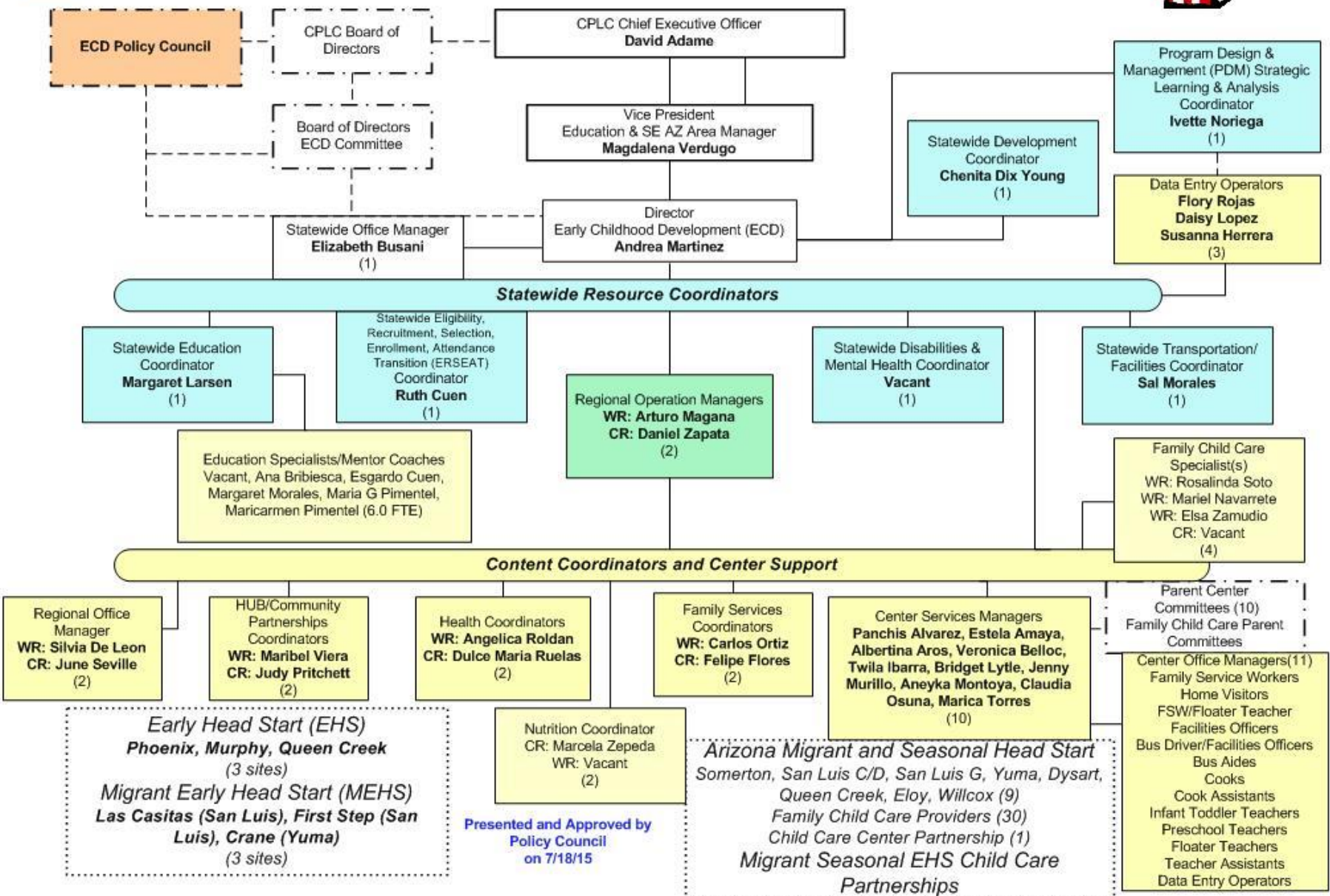
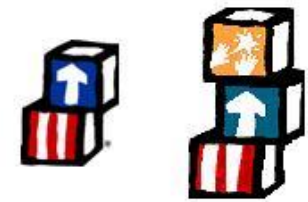


Chicanos Por La Causa, Inc.

A PROMISE OF OPPORTUNITY

STATEWIDE SITES & SERVICES







Early Childhood Development

- 1996
 - Became AZ Migrant & Seasonal Head Start grantee
 - Awarded Early Head Start - South Central Phoenix
- 2000
 - Multiple expansions to Migrant Seasonal Head Start
- 2005
 - Early Head Start expansion for Phoenix, Murphy, Queen Creek
- 2009
 - Migrant Early Head Start expansion for new Yuma & San Luis sites
- 2011
 - Family Child Care Option in Yuma County
- 2015
 - Child Care Partnership 90 additional slots



Early Childhood Development

Over 350 Staff Statewide

Cochise, Pinal, Maricopa, and Yuma Counties

Serving 1054 Children

Over \$20 Million in services





Early Childhood Development Includes...

**Migrant & Seasonal Head Start
Migrant Early Head Start
Early Head Start
Family Child Care
Child Care Partnerships**



Early Childhood Development Geography

5 Program
Options in a
span over
700 square
miles.

- Phoenix to San Luis 208 miles
- Phoenix to Willcox 196 miles
- San Luis to Willcox 345 miles



Regional Structure

Due to the distances between sites, CPLC has designated two service areas for the ECD programs.

CENTRAL REGION

- Sites include Phoenix Early Head Start, Queen Creek, Willcox, Eloy, and Surprise Centers.

WESTERN REGION

- Sites include families in and around the communities of Yuma, Somerton, and San Luis.



CPLC ECD HEAD START PROGRAM

- CPLC ECD's Head Start provides a range of services in the areas of education, early childhood development and service referrals for medical, dental, mental health; nutrition and opportunities for parent engagement.

Eligibility



General Head Start Eligibility

- Age
- Income
- EHS boundaries are Wilson, Roosevelt, Phoenix, and Murphy School Districts

Migrant Eligibility

- Age
- Income
- Migratory Move
- Agriculture Work
 - more than half of the gross annual income must be derived by agriculture work

Definitions



Migrant & Seasonal Head Start Eligibility

Agricultural work that involves the production and harvesting of tree and field crops and whose family income comes primarily from this activity

- **Migrant farm worker**
 - Families engaged in agricultural labor and who have changed their residence from one geographic location to another in the preceding 2 year period
- **Seasonal farm worker**
 - Families engaged primarily in seasonal agricultural labor and who have not changed residence from one geographic location to another in the preceding 2 year period



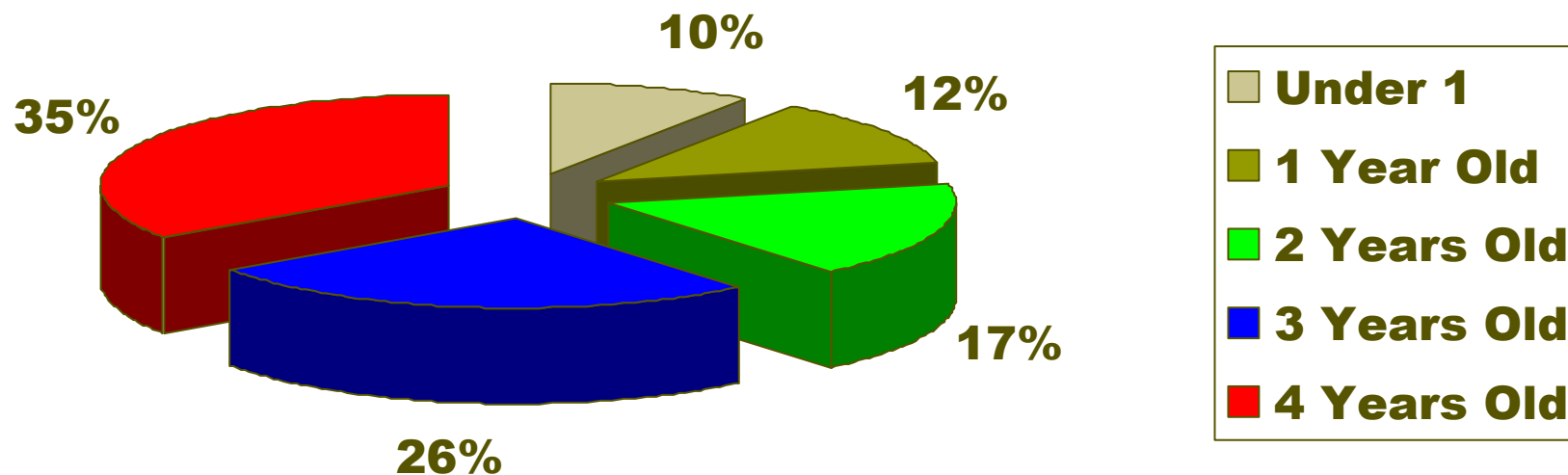
Early Childhood Development

Migrant & Seasonal Head Start

- Served 840 Center Based Children
- All within the ages 0 – 5 years old
- Of the families served 666 were Migrant and 174 were Seasonal farm workers
- CPLC ECD has 12 Migrant and Seasonal centers open throughout the state
- Instructional services are 6.5 - 10 hours daily Monday - Friday



Ages of Children Served MSHS (2014-15)





Migrant & Seasonal Head Start Center Locations

- Surprise (623) 972-7801
- Eloy (520) 466-3438
- Queen Creek (480) 988-1708
- Willcox (520) 384-3140
- San Luis -3 Centers (928) 627-7254
- Somerton (928) 627-2002
- Yuma (928) 783-2363



Migrant Early Head Start (Expansion)

- Served 88 Center Based Children
- Ages 0 – 3 years old
- 88 Migrant farm worker families were served
- Every child receives 6.5 hours of instruction service in the classroom
- 3 sites (Las Casitas, First Step, and Rancho Viejo)



Migrant Early Head Start Locations

First Step
690 N. 10th Ave San Luis, AZ
(928) 627-5050

Las Casitas
541 6th Ave San Luis, AZ
(928) 627-5050

Crane Rancho Viejo
930 S. Ave. C Yuma, AZ
(928) 627-5050



Family Child Care-Child Care Partnership (EHS-CCP)

- EHS-CCP is a new competitive grant opportunity that incentivizes local partnerships between EHS programs and Child Care Programs to increase the number of infants and toddlers in high quality early learning programs.
- The expansion grant awarded CPLC 90 slots
- 48 children will be served for 48 weeks with DES Providers
- 42 children will be served in center based settings for 37- 48 weeks depending on the location of service.



Early Childhood Development

Early Head Start (EHS)

Center Based
and Home Based Services

0 – 3 years old

Pregnant Women

3 sites



Early Head Start

Service Areas for Center & Home Base

Phoenix & Murphy

- by school districts- Wilson, Roosevelt, Phoenix and Murphy

Queen Creek

- Town of Queen Creek in Maricopa County



Early Childhood Development

Early Head Start Locations

- **Phoenix EHS Center**
1402 S. Central Ave. Phoenix
(602) 716-0156
48 Center Based; 20 Home Based
- **Murphy EHS Site**
3140 W. Buckeye Rd. Phoenix
(602) 716-0156
16 Center Based; 20 Home Based
- **Queen Creek Center**
18149 E. San Tan Blvd. Queen Creek
(480) 988-1708
8 Center Based; 12 Home Based



Early Childhood Development Focus

- Is on ensuring not only school readiness, but also social competence for every child enrolled. We implement a comprehensive program that provides an array of services to ensure children are healthy and able to learn.
- Teacher accreditation is a key component of ensuring school readiness, as professionally developed teachers are able to provide the highest quality learning experiences for children.



ECD Developmental Screenings

- Children are provided with individualized education plans that focus on ensuring that specific learning goals are established and supported.
- Every child enrolled in Head Start program receive a developmental screening using the Ages and Stages Questionnaire: 3 and the Ages and Stages Questionnaire: SE for Social Emotional screening.

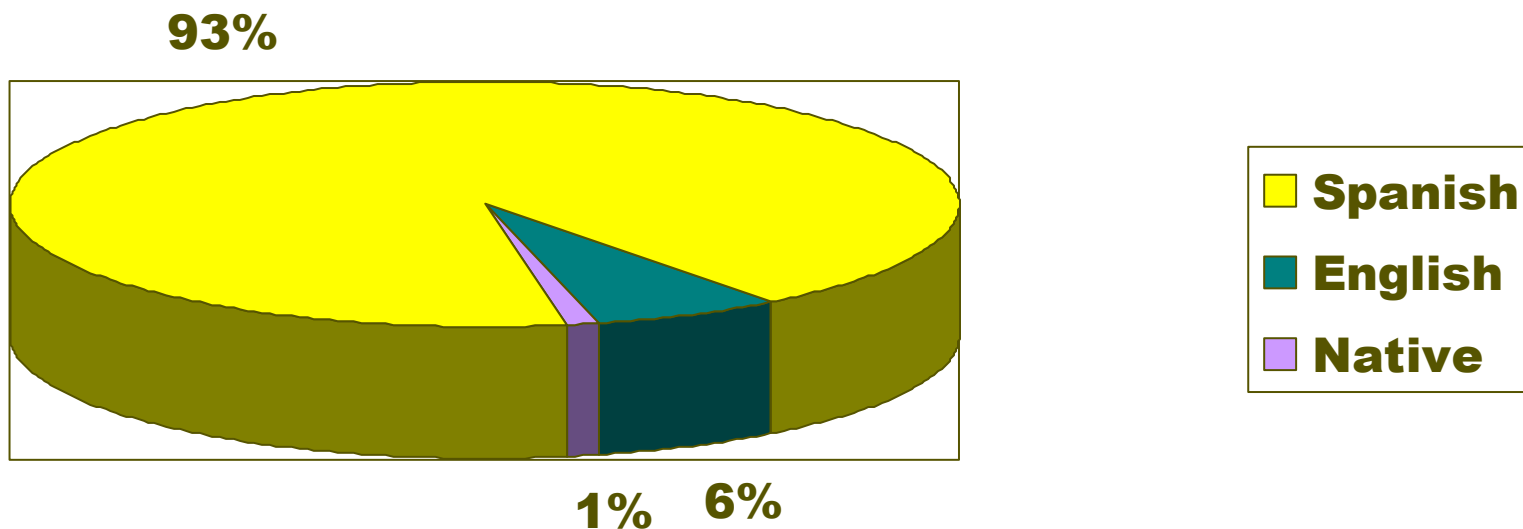


Dual Language

- CPLC maintains a dual language policy to ensure early learning by supporting the home language, as well as the acquisition of English.
- In addition, ECD also maintains formal agreements with Local Education Agencies (LEA) to ensure a seamless transition process for preschoolers leaving the Head Start programs and entering Kindergarten.



Primary Language of Family at Home (2014-15)





ECD Transition

- CPLC ECD support parents and children in the classroom to ensure they have a strong level of understanding regarding transitioning to public schools and other Early Childhood Development programs through the following activities:
- Home visits and Parent conferences
- Parent Committee Meetings
- Classroom planning; field trips, transition plans, newsletters
- Parent Training/Education



CHALLENGES WITH FARMWORKER FAMILIES

- Increase of Over Income Status
- Lack of Mobility
- Lack of WORK due to Drought
- Irregular child attendance
- Lack of parent engagement



CHALLENGES WITH COMMUNITY PARTNERS

- Staff turnover due to partners recruiting ECD staff
- State of AZ recruited over 1000 Early Childhood Educators offering better salaries & benefits
- Federal and State Budget cuts affecting program services in the community.
- Child care providers not meeting the Arizona State Licensing Requirements.



Steps on Strengthening our Collaborations

- Continue recruiting and referring children and families
- Build on Transition Collaborations between agencies
- Strengthen State and Local partnerships
- Work together not in silos
- Continue building coalitions to capture a child's journey
- Get involved with the your community; Network, Network, Network



NATIONAL MIGRANT AND SEASONAL HEAD START ASSOCIATION PARENT AFFILIATE

We will close with a video featuring migrant and seasonal head start parents at work

VIDEO



CPLC Early Childhood Development

- **QUESTIONS, COMMENTS, CONCERNS**



Thank You



Chicanos Por La Causa, Inc.

A PROMISE OF OPPORTUNITY

www.cplc.org



**ECD Statewide Office
1242 E. Washington St. Suite 200
Phoenix, AZ 85034
(602) 307-5818**